



Council Tax band: D

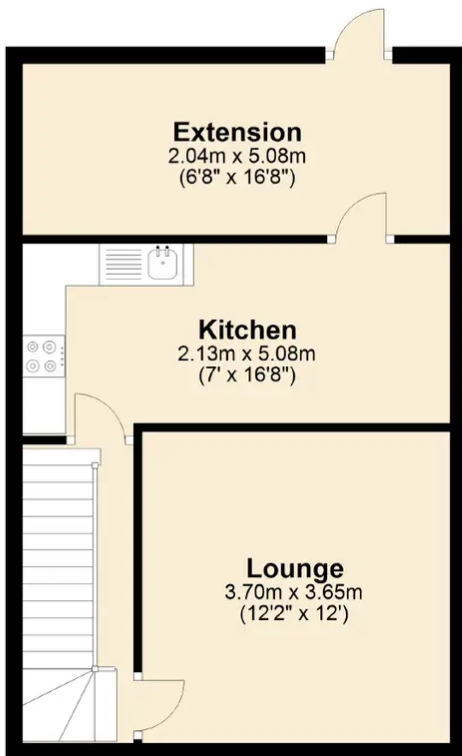
Tenure: Freehold

- Freehold
- Terraced Home
- Great condition throughout
- Two double bedrooms
- Open plan kitchen
- Family sized lounge
- Spacious garden
- Potential for rear extension



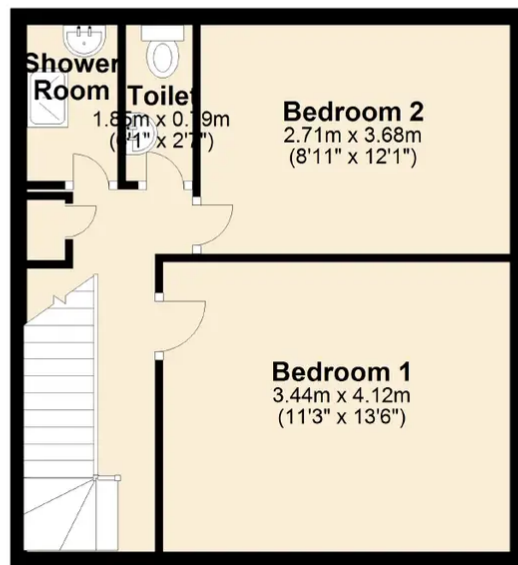
### Ground Floor

Approx. 41.0 sq. metres (441.0 sq. feet)



### First Floor

Approx. 35.9 sq. metres (386.2 sq. feet)



Total area: approx. 76.8 sq. metres (827.2 sq. feet)

You can include any text here. The text can be modified upon generating your brochure.